



# QuietRock<sup>®</sup> 545

HIGHER PERFORMANCE, HIGHER RELIABILITY, LOWER COST SOUNDPROOFING SOLUTIONS.

## The highest performing soundproofing drywall on the market designed for commercial theaters, professional studios, and media rooms

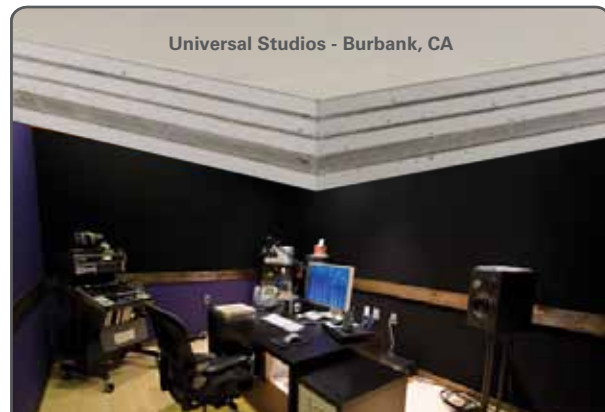
QuietRock 545 is uniquely engineered to provide design provides maximum noise reduction for high-end home theaters, commercial theaters, professional studios and music rooms. QuietRock 545 is a superior sound damped panel that offers reliable, high STC ratings with just a single layer.

### QuietRock 545 Benefits

- Highest performing sound damping drywall available
- Delivers superior soundproofing for both high and low frequencies
- Ideal for high-end home theaters, studios, commercial theaters, and other sound rooms
- Lab tested and proven to outperform older conventional sound proofing methods
- Offers high STC ratings, up to STC 80

### Product Specifications

<b>Model:</b>	<b>QuietRock 545</b>
Thickness:	1-3/8"
Weight:	6.2 lbs/sf <sup>2</sup>
STC-rated:	60-80
Permeability:	0



Universal Studios - Burbank, CA

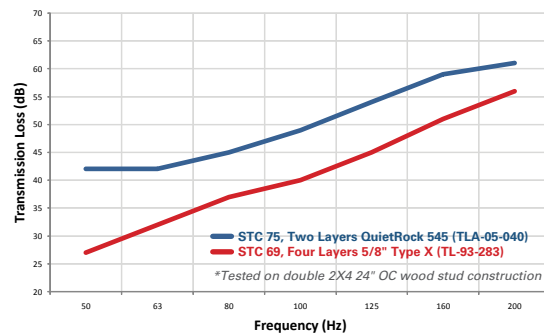
The worlds' leading media production companies choose QuietRock 545.

### STC Comparison\*

5/8" gypsum	39
6" CMU	45
Soundboard	46
Mass loaded vinyl	45
<b>QuietRock 545THX</b>	<b>60</b>

\*in single wood stud construction, 24" OC

### QuietRock 545 Performance



### Applications

Home theaters  
 Commercial theaters  
 Recording studios  
 Government  
 Offices  
 Conference rooms

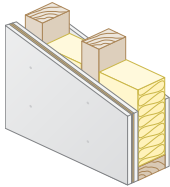


# QuietRock 545

HIGHER PERFORMANCE, HIGHER RELIABILITY, LOWER COST SOUNDPROOFING SOLUTIONS.

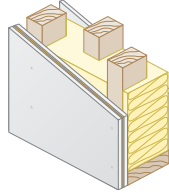
## Lowest-Cost Solutions in the Market

**Lowest Cost Wall**  
QuietRock on one side



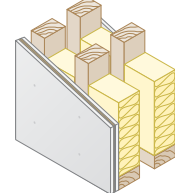
STC: 56\*

**Staggered Stud Wall**  
QuietRock on one side



STC: 64\*

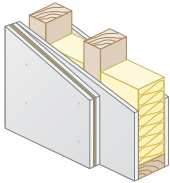
**Double Stud Wall**  
QuietRock on one side



STC: 71\*

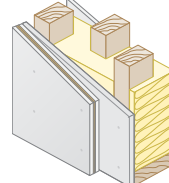
## Retrofit and Remodeling

**Single Stud Wall**  
QuietRock on one side  
of existing drywall



STC: 58\*

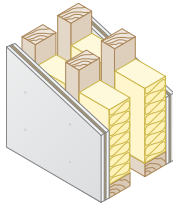
**Staggered Stud Wall**  
QuietRock on one side  
of existing drywall



STC: 66\*

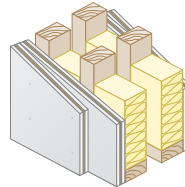
## High Performance

**Double Stud Wall**  
QuietRock on both sides



STC: 75

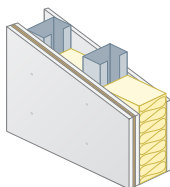
**Double Stud Wall**  
Double layer of QuietRock  
on both sides



STC: 80

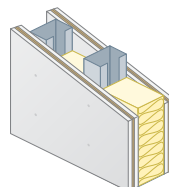
## Steel - Single layer assembly noise reduction

**Lowest Cost Wall**  
QuietRock on one side



STC: 62\*

**Single Stud Wall**  
QuietRock on both sides



STC: 66\*

\*Estimate

The information contained in this document is for general information purposes only. Features and specifications are subject to change. The diagrams and stated STC ratings listed are intended to serve as a guide. Construction practices have an influence on final STC ratings. Serious Materials cannot guarantee actual STC ratings. Flanking sound patterns, the integrity of the wall, and floor and ceiling construction are important factors in effective sound control.

STC ratings are on 24" OC wood studs unless otherwise specified

